

# Existing Conditions Maps

# Contents

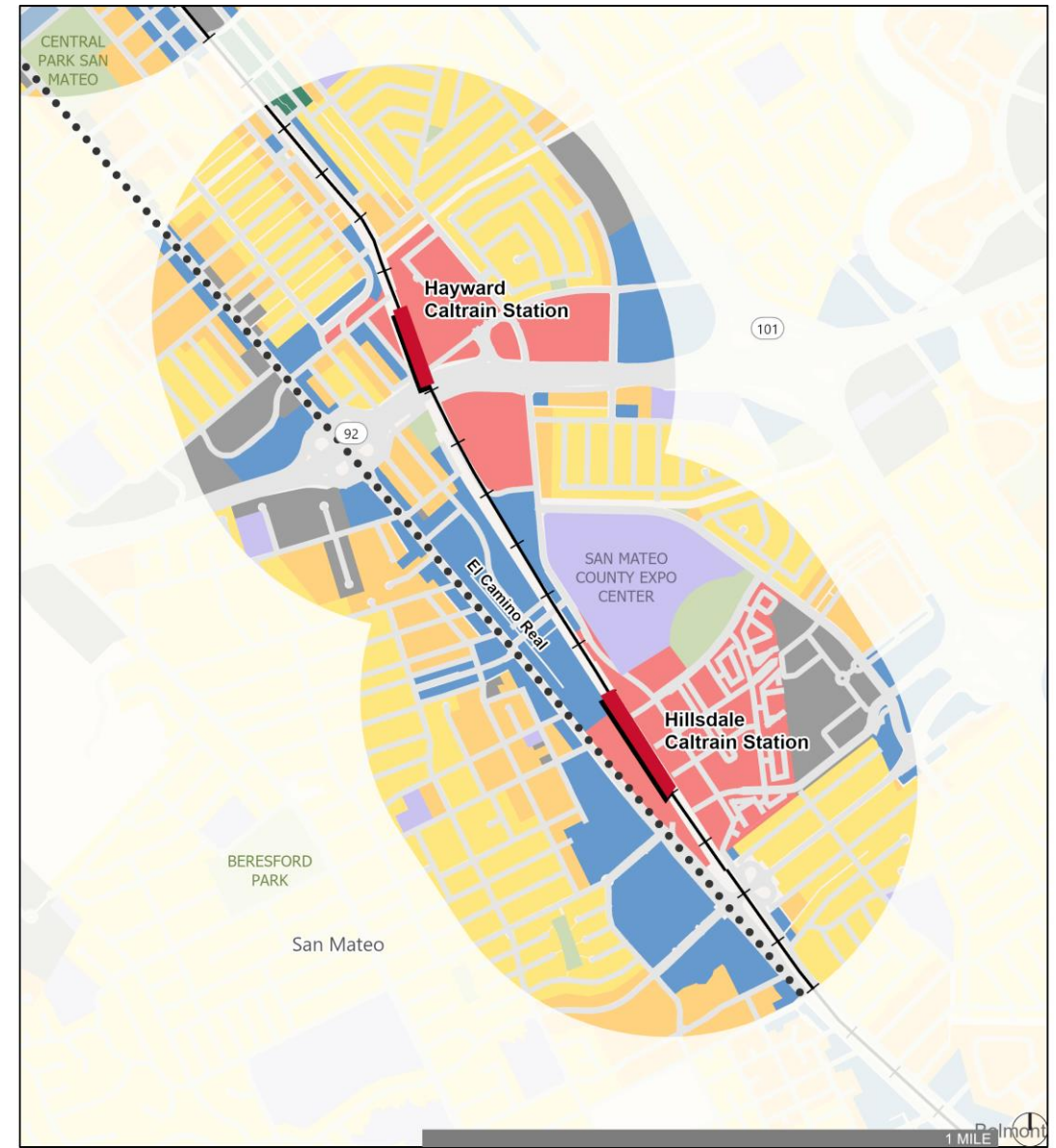
- Land Use & Demographics
  - Land uses
  - Senior centers & landmarks
  - CalEnviroScreen
- Transportation Facilities
  - Roadway typology
  - Signalized Intersections
  - Level of Traffic Stress
  - Pedestrian Collisions
  - Missing sidewalks
- Planned Improvements
  - Development projects
  - Planned pedestrian improvements

# Land Use & Demographics

# Land Use



Source: City of San Mateo, 2021

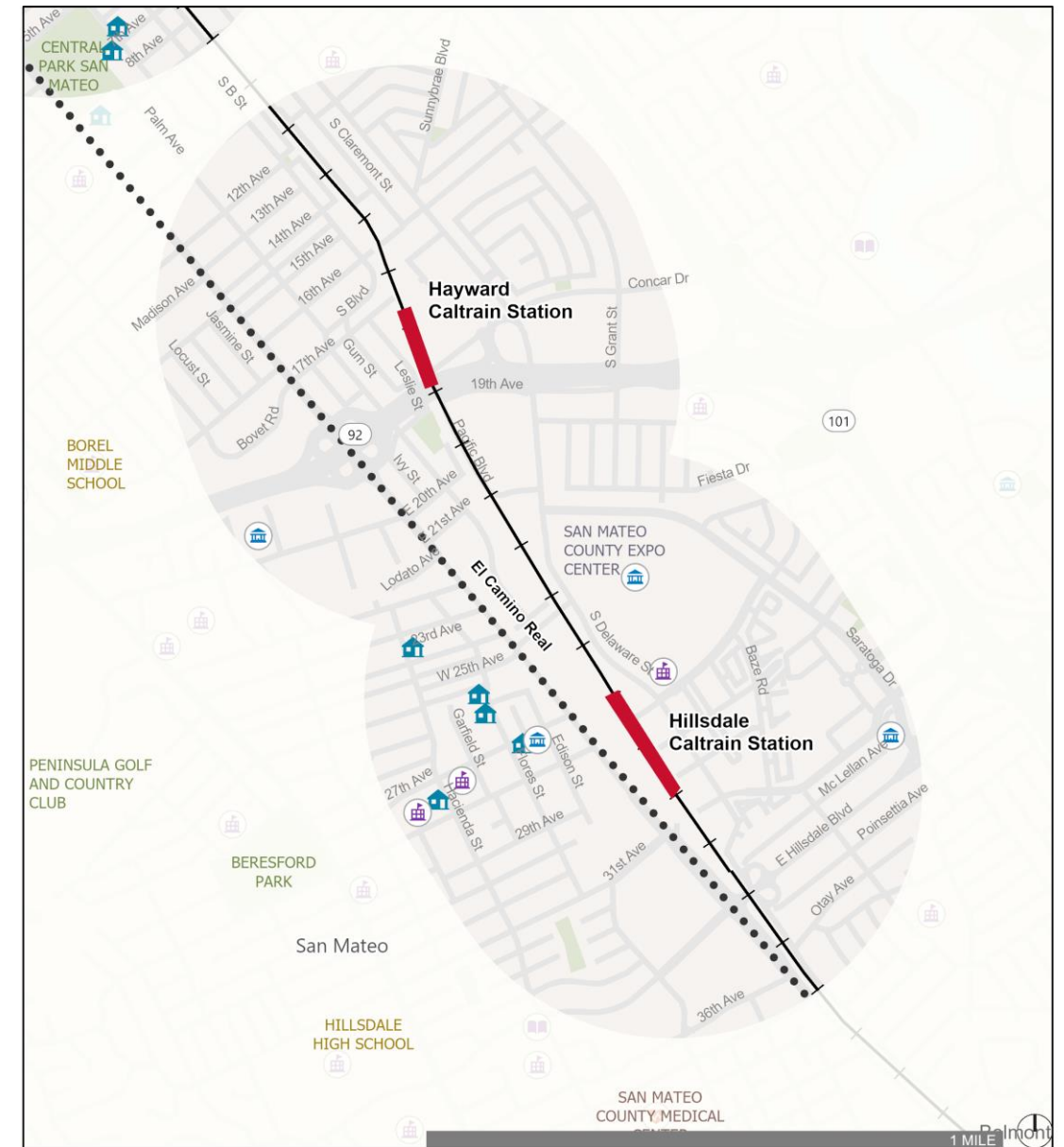




# Senior Centers and Landmarks



Source: City of San Mateo, 2021



# CalEnviroScreen

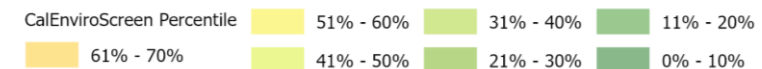
CalEnviroScreen assesses population characteristics and pollution burden to measure community vulnerability to pollution.

The map shows community exposure and vulnerability to pollution at the census tract level, using an aggregated percentile index in comparison with the rest of the state. The lowest percentile in green reflects census tracts least impacted by pollution and the high percentiles in yellow show areas with higher pollution impacts.





# CalEnviroScreen



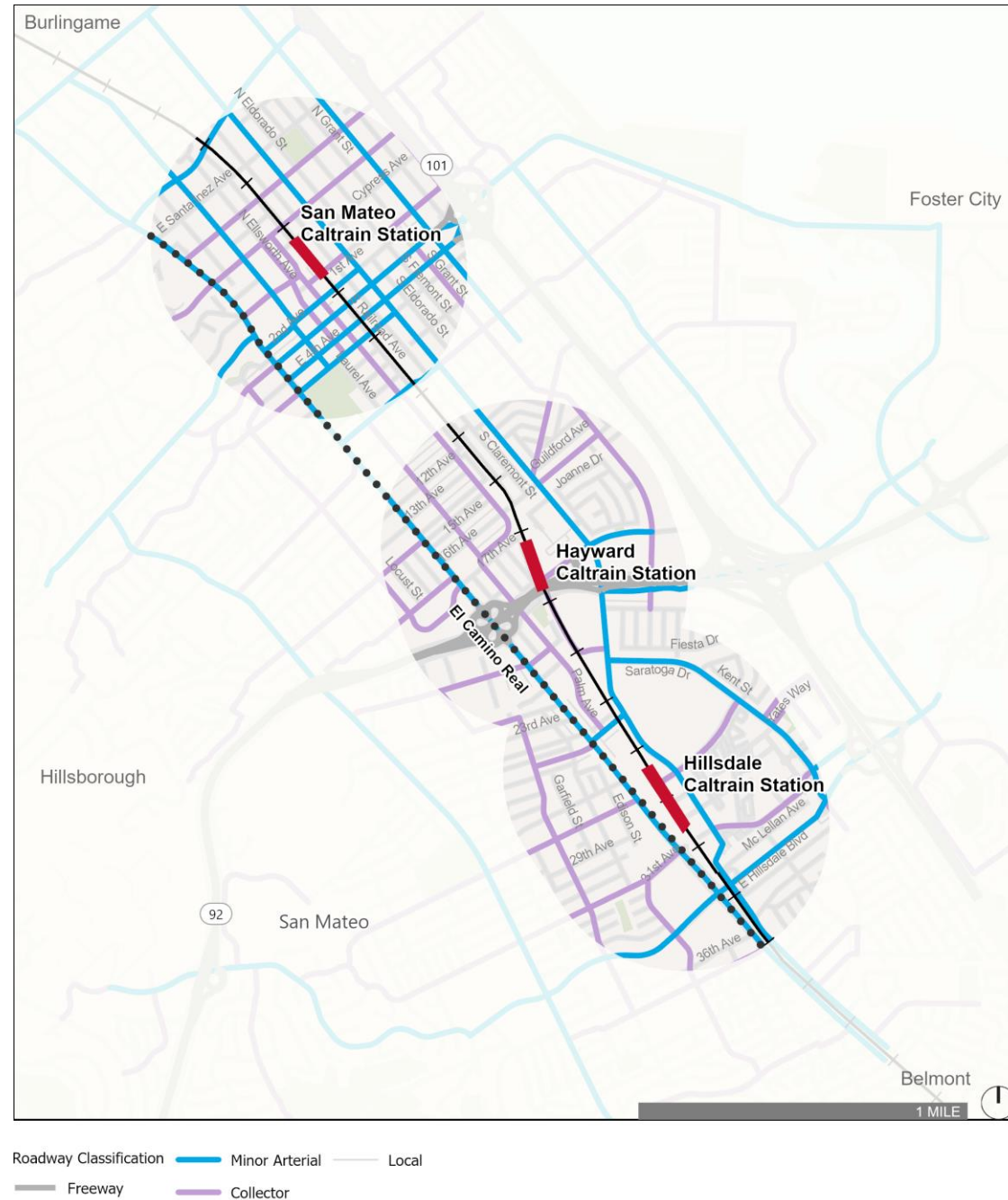
Source: CalEnviroScreen 4.0, OEHHA, 2021

# Existing Transportation Facilities



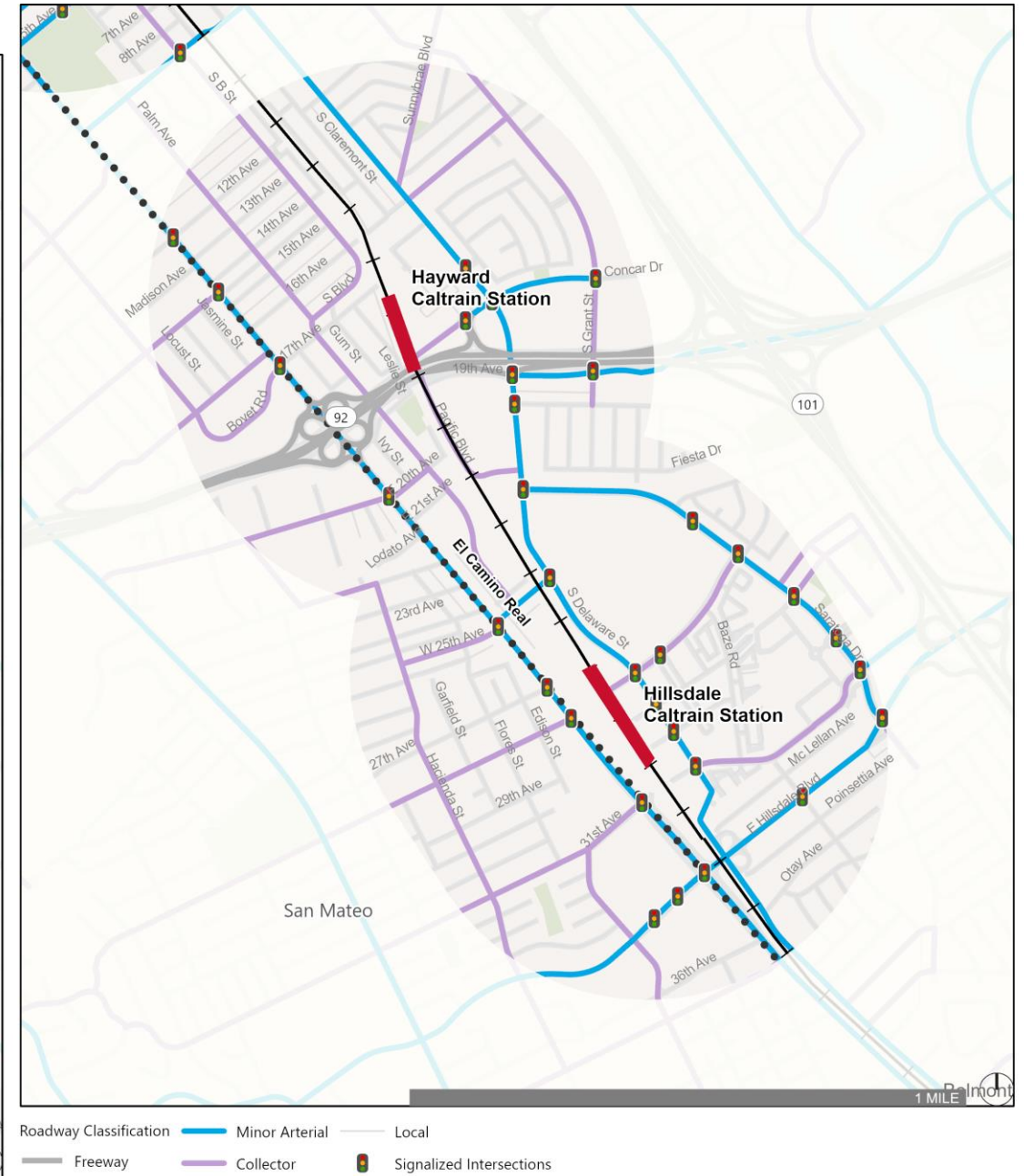
# Roadway Typology

Number of travel lanes can be assumed from Open Street Map or roadway functional classification



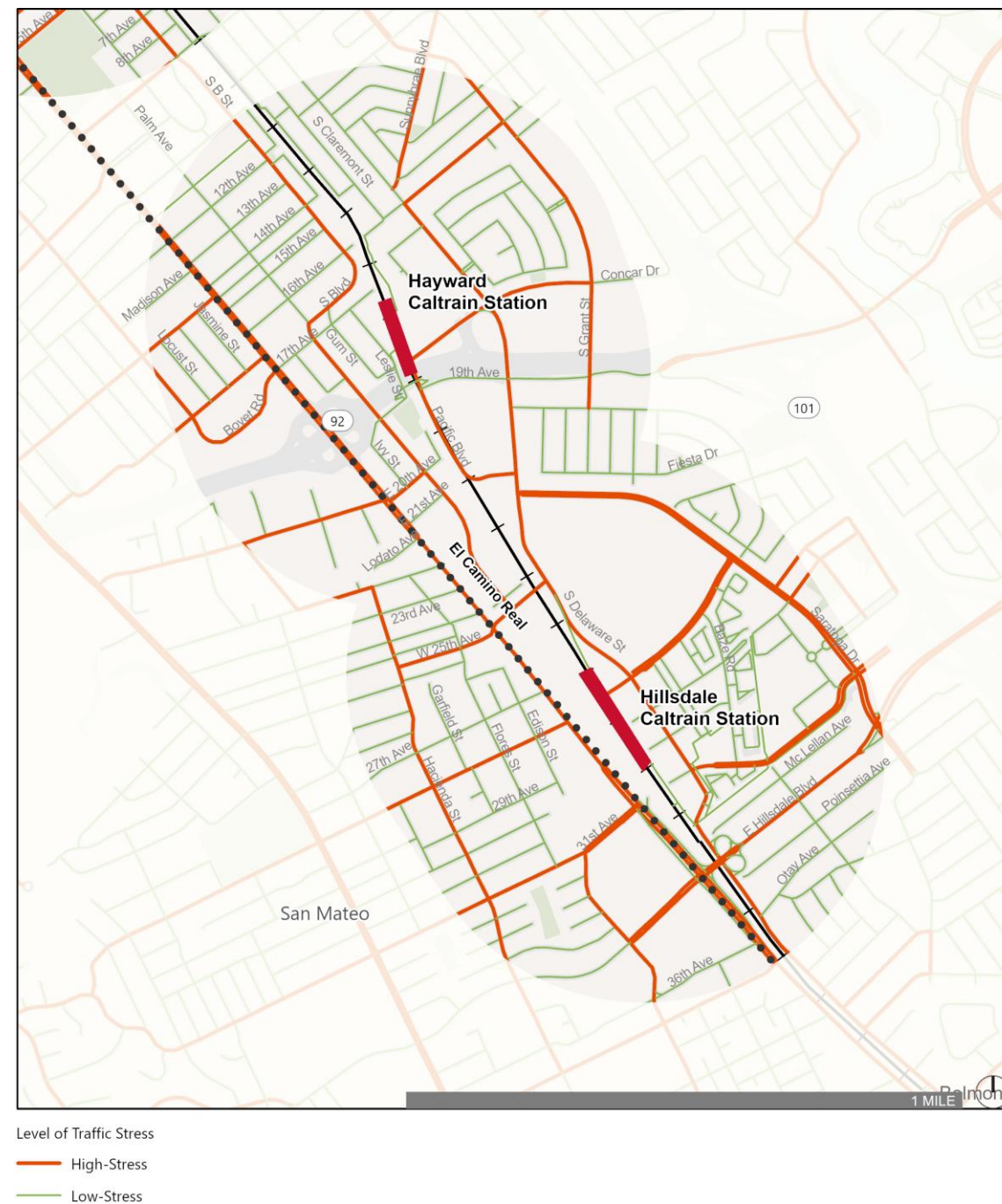
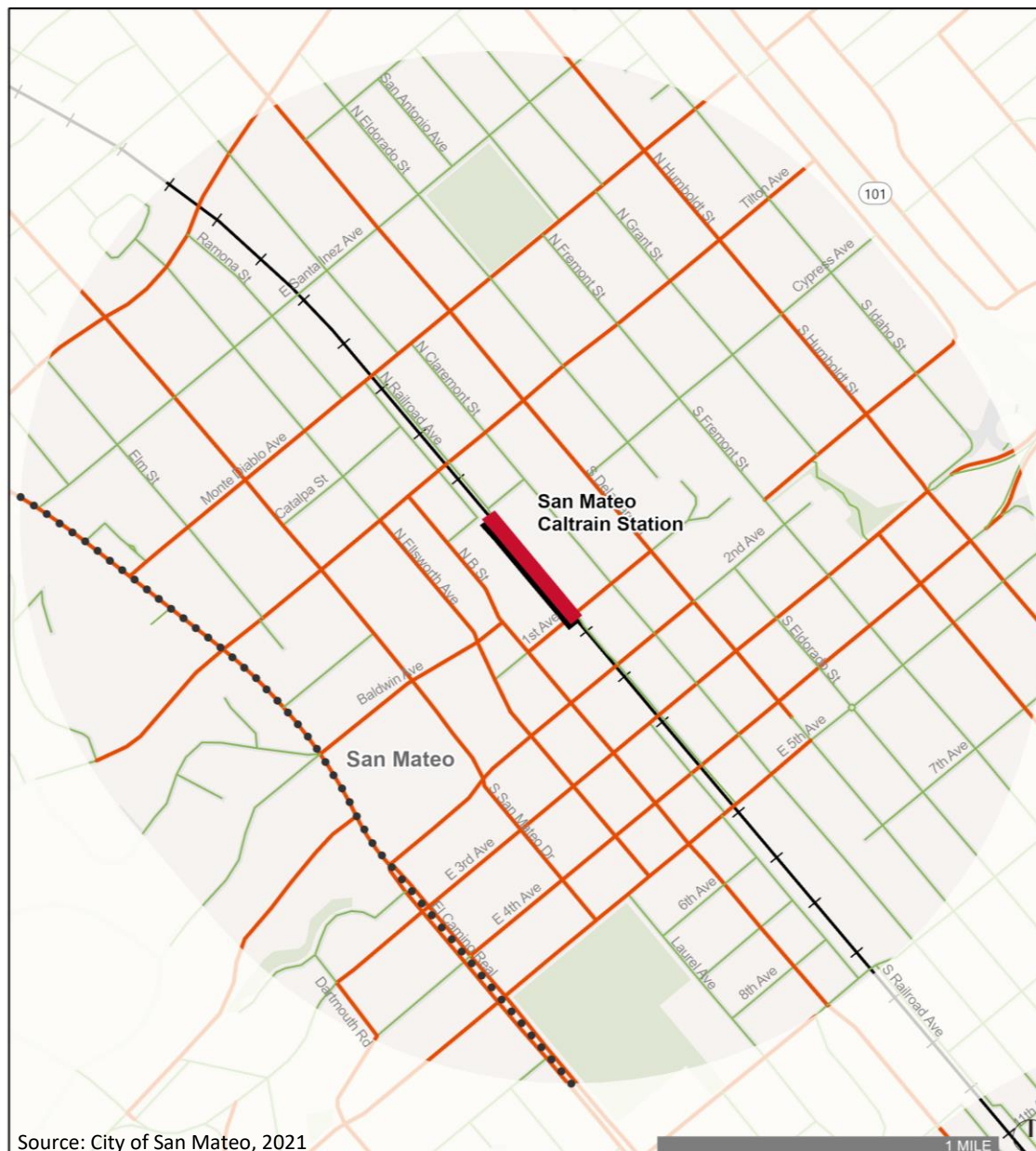
Source: City of San Mateo, 2021

# Intersection Traffic Control



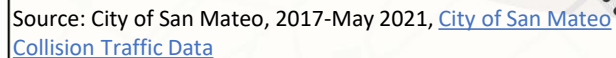


## FEHR &amp; PEERS

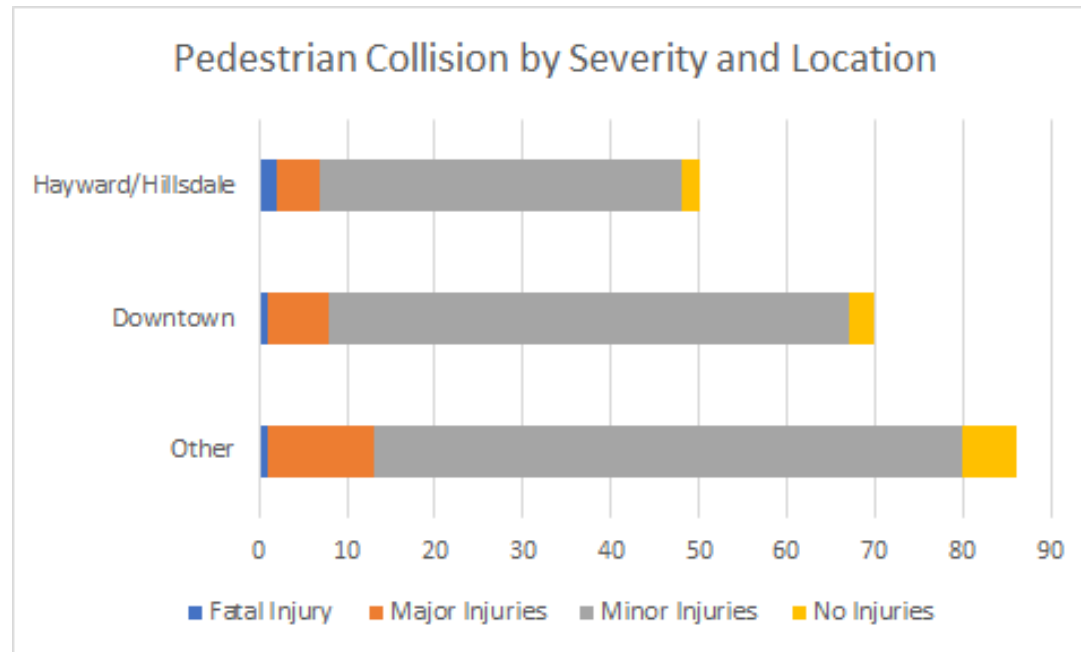




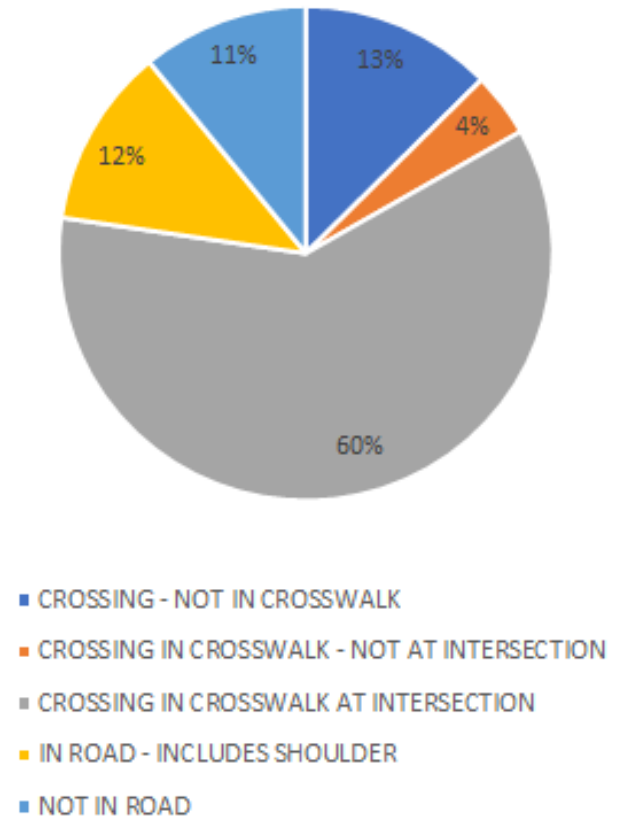
## FEHR &amp; PEERS



# Pedestrian Collisions

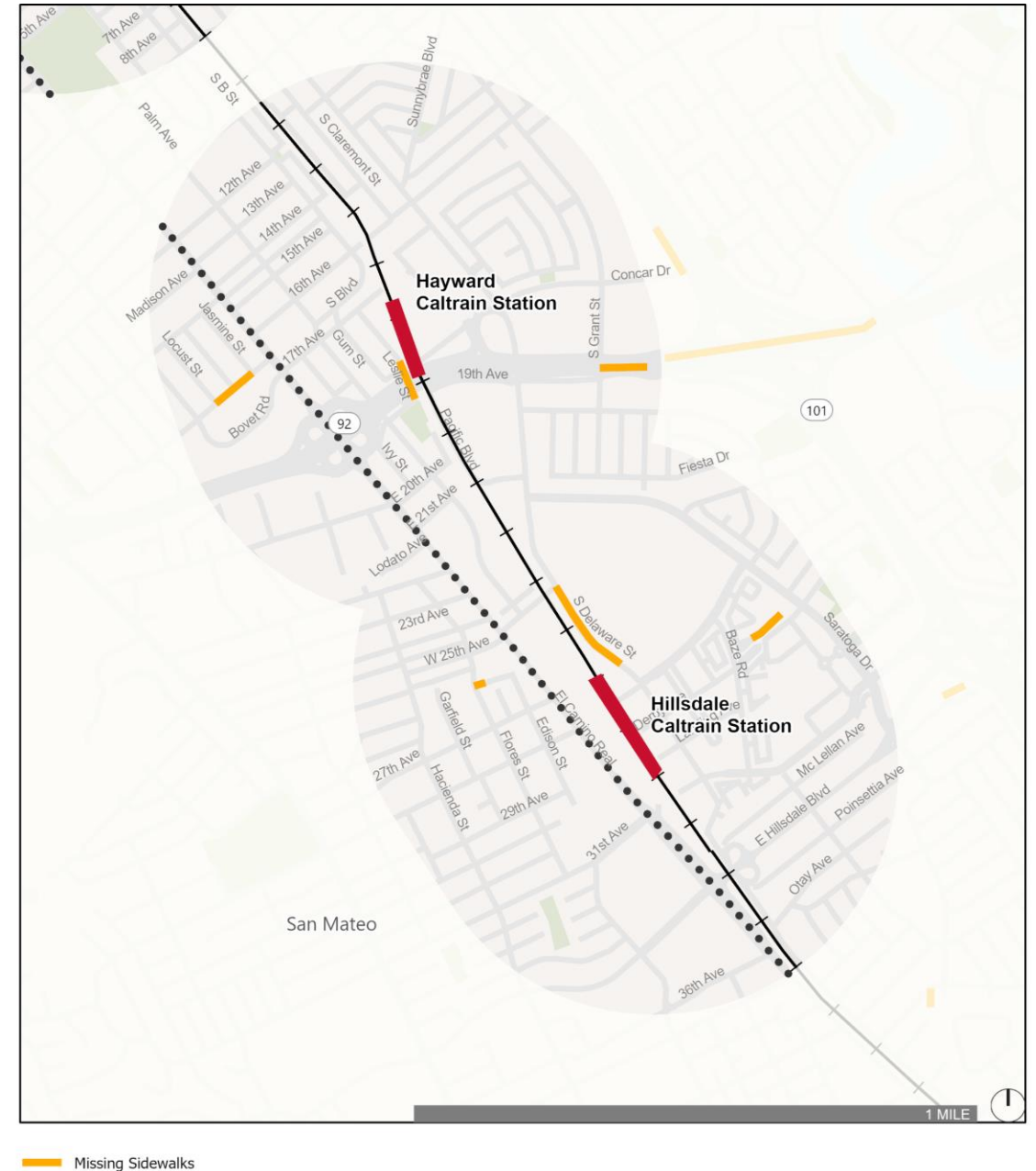


Pedestrian Actions for Ped Collisions in Study Areas



# Sidewalks

## Missing Sidewalks





# Planned Improvements

# Development Projects



# Planned Pedestrian Improvements



Source: City of San Mateo, San Mateo Pedestrian Plan, 2012

- Planned Pedestrian Improvements
- Advance Stop Bars
  - Curb Extensions
  - Advance Yield Line
  - High Visibility Crosswalk